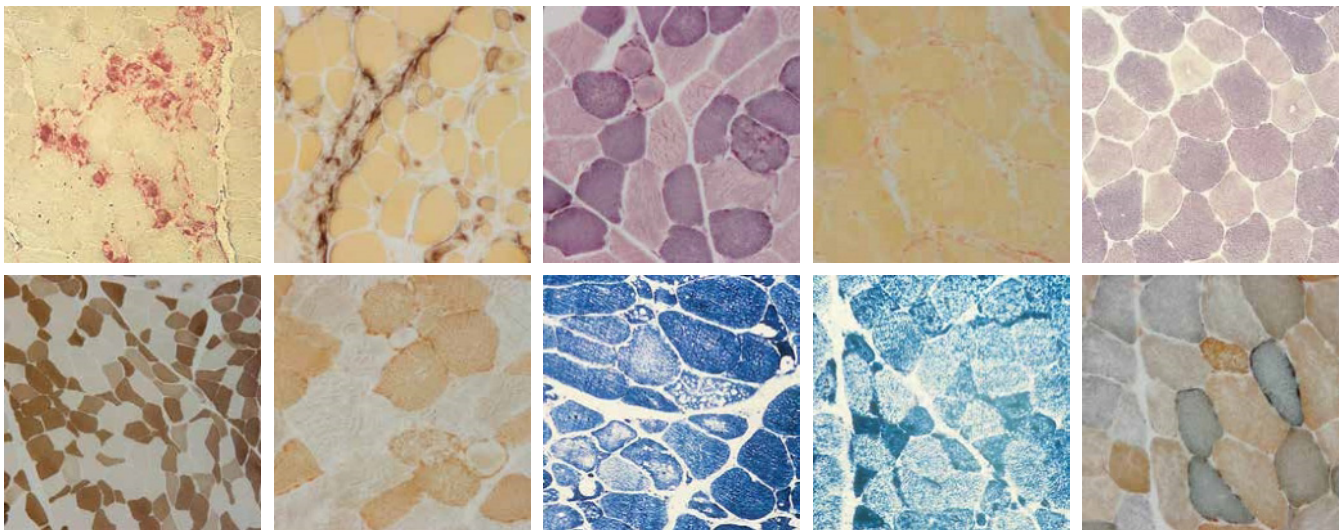


ENZYME HISTOCHEMISTRY

Kits and solutions

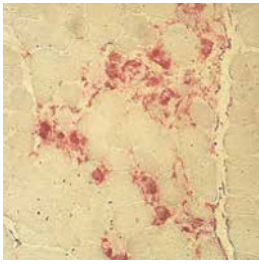


Microscopic examination of sections of muscle biopsies is an essential tool in the diagnosis of neuromuscular disorders.

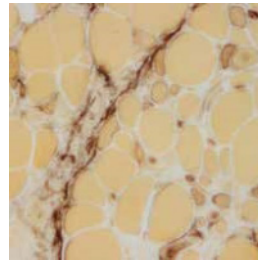
Any laboratory choosing to conduct histo-enzymatic tests on muscle biopsies encounters a series of problems:

- high toxicity of certain reagent
- solutions that are difficult and complex to standardize
- storage of solutions at -20°
- poor reproducibility of final results.

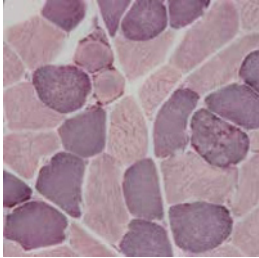
To overcome all these problems, Bio-Optica has developed ready-to-use kits for enzyme histochemistry. Enzyme histochemistry kits eliminate the difficulties and risks associated with the preparation of stain solutions, thus ensuring reproducible results.



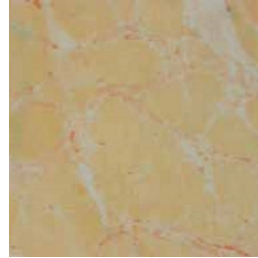
Acid phosphatase
30-30118LY 10 ml
Highlighting enzymatic activity of acid phosphatase. Present in macrophages and lysosomes; identifies necrosis and regeneration.



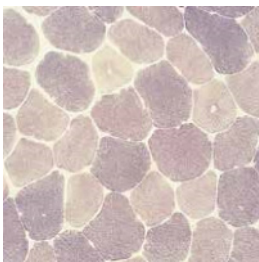
Alkaline phosphatase Stain
30-30121LY 10 ml
Evaluating enzymatic activity of alkaline phosphatase. Useful for highlighting the sites of phagocytosis and inflammation in muscle biopsies.



NADH diaphorase
30-30113LY 10 ml
Evaluation of NADH diaphorase activity. Staining useful for distinguishing type 1 and type 2 muscle fibers, often used in conjunction with ATPase evaluation.



Esterase
30-30122LY 10 ml
Highlighting positive enzymatic activity of esterase in denervated fibers.



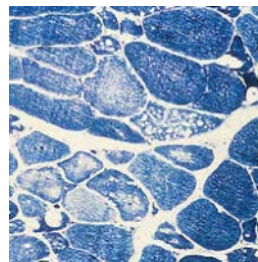
Phosphorylase
30-30123LY 10 ml
Highlighting enzymes belonging to the phosphorylase class involved in glycogenolysis.



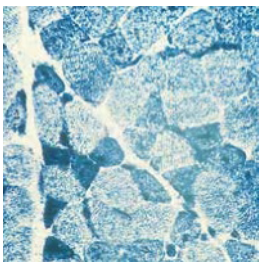
ATPase
30-30125LY 10 ml
For determining the types of muscle fibers. For use with cryostat sections of striated muscle with a thickness of 8 µm.



Cytochrome C oxidase
30-30115LY 10 ml
Evaluation of Cytochrome C oxidase activity.



Myoadenylate deaminase
30-30116LY 10 ml
Highlighting of enzymatic activity of myoadenylate deaminase (AMPDA)



Phosphofructokinase
30-30117LY 10 ml
Highlighting enzymatic activity of PFK, useful for determining whether glycogen storage disease depends on a deficiency of phosphofructokinase or on other enzymes involved in the metabolism of glycogen.



Succinic dehydrogenase
30-30114LY 10 ml
Evaluation of enzymatic activity of succinate dehydrogenase (SDH) detected specifically in the mitochondria.

FIXATIVES AND SOLUTIONS FOR ENZYME HISTOCHEMISTRY

FIXATIVES		
Backer fixative	30-30111	500 ml
Fixative for Acid Phosphatase	30-30120	100 ml
STAINING SOLUTIONS		
Methyl Green Buffered Solution	30-30119	100 ml
Oil red O solution	30-30112	100 ml
Trichrome stain Gomori	30-30110	100 ml