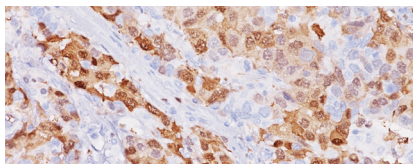




**BIOCARE**  
M E D I C A L

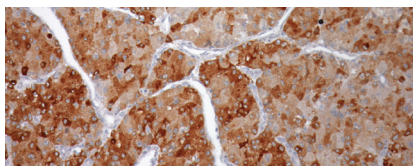
# Key Antibodies For Liver Pathology

## Top Rated Liver Antibodies



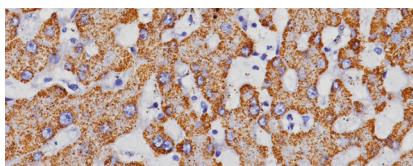
### Arginase-1

Arginase-1 (ARG-1) is a highly specific and sensitive marker of benign and hepatocellular carcinoma (HCC).



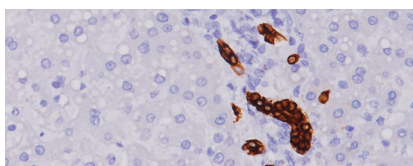
### Glypican-3

Glypican-3 (GPC3) protein is expressed in most hepatocellular carcinomas (HCC), but is undetectable in cholangiocellular carcinoma, normal liver and benign hepatic lesions.



### Hepatocyte Specific Antigen (HSA)












Hepatocyte Specific Antigen (HSA) is very specific for normal and neoplastic hepatocytes and expressed in the majority of hepatocellular carcinomas.



### Cytokeratin 19 (CK19)

Cytokeratin 19 reacts with the rod domain of human keratin 19. The antibody has been shown to label trichoblastoma, thyroid tumors, oral cancer, and epithelial odontogenic tumors.

# Key Antibodies for Liver Pathology

Product Name	Source	Clone	Catalog Number
Arginase-1 (RM)		EP261	ACI; API; AVI 058
Glypican-3		1G12	CM; PM 396
Hepatocyte Specific Antigen (HSA)		OCH1E5	CM; PM 166
Cytokeratin 19 (CK19)		Ks19.1	CM; PM 242
MOC-31		MOC-31	CM; PM 403
Alpha-1-Fetoprotein (AFP)		Polyclonal	CP; PP 028
Carcinoembryonic Antigen (CEA)		COL-1	CM; PM 058
Cytokeratin LMW (8/18)		5D3	CM; PM; IPI 056
Cytokeratin HMW [34βE12]		34βE12	CM; PM; IPI 127
Glutamine Synthetase		6/Glutamine Synthetase	ACI; API 3009
H3K27me3 [C36B11]		C36B11	ACI; API 3249