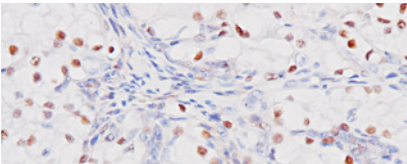




BIOCARE
M E D I C A L

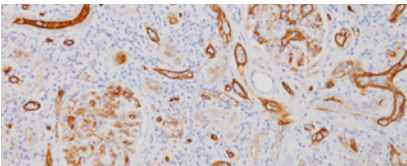
Key Antibodies For Kidney Pathology

Top Rated Kidney Antibodies



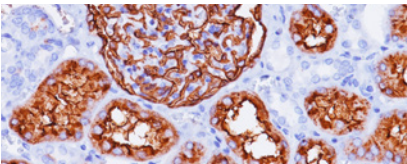
PAX8

PAX8 [BC12] stains nuclei exclusively and does not stain B-cells, nor does it recognize epitopes of pancreatic origin and neuroendocrine cells in stomach and colon.



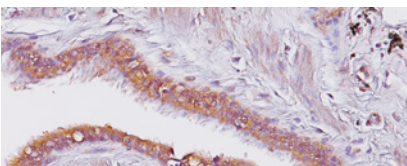
C4d

C4d deposition may be a valuable marker for humoral rejection and is associated with inferior kidney graft outcomes.



CD10












CD10 is expressed in some non-lymphoid tissues such as brush border of kidney. Loss of CD10 is often seen in papillary renal cell carcinomas.



Amyloid A

Amyloid A reacts with native and fixed amyloid fibrils. It also reacts with amyloid deposits including kidney and rectum.

Key Antibodies for Kidney Pathology

Product Name	Source	Clone	Catalog Number
CD39 [EPR20627]		EPR20627	ACI; API; OPAI; ALI; AVI; 3283
PAX8		BC12	ACI; API; AVI 438
Pan TRK [RM423]		RM423	ACI; API; OPAI; AVI; ALI 3267
C4d (RM)		A24-T	ACI; API 3134
CD10		56C6	CM; PM IP 129
CD247 [BL-336-1B2]		BL-336-1B2]	ACI; API 3268
Amyloid A		mc1	CM; PM 125
Amyloid P		N/A	PP 132
AMACR (RM)		13H4	APA 3024
AMACR (RM), 2X		13H4	APA 3016
CA-9		N/A	ACI, ALI, API, AVI 3285