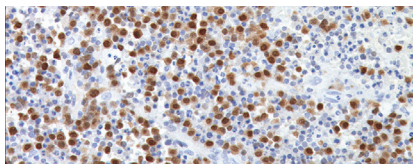




BIOCARE
M E D I C A L

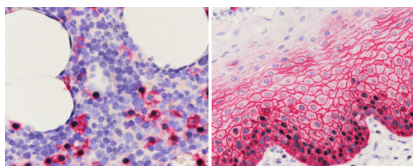
Key Antibodies For Multiple Myeloma

Top Rated Multiple Myeloma Antibodies



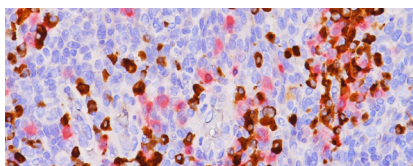
MUM-1

Multiple myeloma oncogene-1 (MUM-1) labels centrocytes and their progeny, plasma cells, activated T-cells and a wide spectrum of hematolymphoid neoplasms derived from these cells.



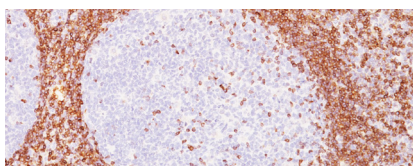
CD138 + Cyclin D1

Detection of abnormal numbers and/or distribution of bone marrow plasma cells on trephine biopsies can be of importance in the differential diagnosis of multiple myeloma and other plasma cell neoplasms.



Kappa (M) + Lambda (P)

The antibody recognizes both Kappa and Lambda light chains, which may be useful in the identification of plasmacytoma and multiple myeloma.














Bcl-2

The 100/D5 clone is highly specific to Bcl-2 antibody (alpha) and shows no cross-reactivity with Bcl-x or Bax protein.

www.biocare.net/multiple-myeloma

Key Antibodies for Multiple Myeloma

Product Name	Source	Clone	Catalog Number
Kappa Light Chain [L1C1]		L1C1	ACI; API; VLTM 3149
Lambda Light Chain [N10/2]		N10/2	ACI; API; VLTM 3063
Kappa (M) + Lambda (P)		L1C1 + Polyclonal	API 3159DS
Bcl-2		100/D5	CM; PM; IP; OAI; VLTM 003
CD56		BC56C04	CM; PM; OAI 164
CD79a		HM47/A9	CM; PM; VLTM 067
CD138		B-A38	CM; PM; IP; VLTM 167
Cyclin D1		EP12	CME; PME; OAI; VLTR 432
MUM-1		BC5	CRM; PRM; OAI; VLTR 352
CD138 + Cyclin D1		B-A38 + SP4	API 3193DS
CD138 + Ki-67		B-A38 + SP6	API 3169DS