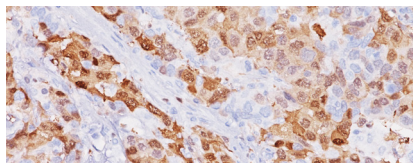




BIOCARE
M E D I C A L

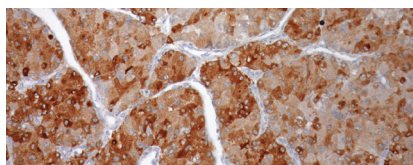
Key Antibodies For Liver Pathology

Top Rated Liver Antibodies



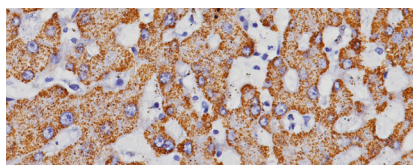
Arginase-1

Arginase-1 (ARG-1) is a highly specific and sensitive marker of benign and hepatocellular carcinoma (HCC).



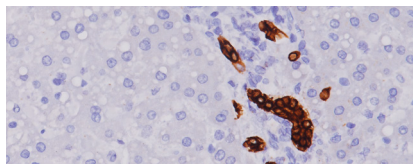
Glypican-3

Glypican-3 (GPC3) protein is expressed in most hepatocellular carcinomas (HCC), but is undetectable in cholangiocellular carcinoma, normal liver and benign hepatic lesions.



Hepatocyte Specific Antigen (HSA)











Hepatocyte Specific Antigen (HSA) is very specific for normal and neoplastic hepatocytes and expressed in the majority of hepatocellular carcinomas.



Cytokeratin 19 (CK19)

Cytokeratin 19 reacts with the rod domain of human keratin 19. The antibody has been shown to label trichoblastoma, thyroid tumors, oral cancer, and epithelial odontogenic tumors.

Key Antibodies for Liver Pathology

Product Name	Source	Clone	Catalog Number
Arginase-1 (RM)		EP261	ACI; API; AVI; OAI; VLTR 3058
Glypican-3		1G12	CM; PM 396
Hepatocyte Specific Antigen (HSA)		OCH1E5	CM; PM; OAI 166
Cytokeratin 19 (CK19)		Ks19.1	CM; PM; OAI 242
MOC-31		MOC-31	CM; PM 403
Alpha-1-Fetoprotein (AFP)		Polyclonal	CP; PP 028
Carcinoembryonic Antigen (CEA)		COL-1	CM; PM; VLTM 058
Cytokeratin LMW (8/18)		5D3	CM; PM; IPI; OAI; VLTM 056
Cytokeratin HMW [34βE12]		34βE12	CM; PM; IPI; OAI; VLTM 127
Glutamine Synthetase		6/Glutamine Synthetase	ACI; API 3009