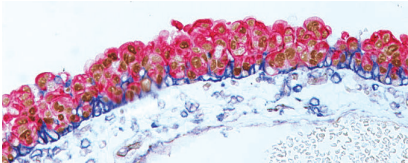




BIOCARE
M E D I C A L

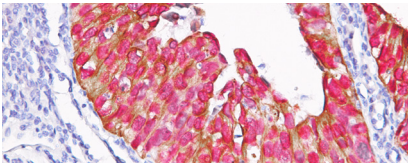
Key Antibodies For Bladder Pathology

Top Rated Bladder Antibodies



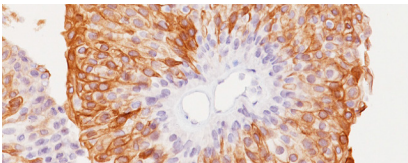
URO-3™ Triple Stain

URO-3 Triple Stain (CD44 + p53 + CK20) may aid in differentiating urothelial reactive atypia from carcinoma in situ (CIS) in bladder.



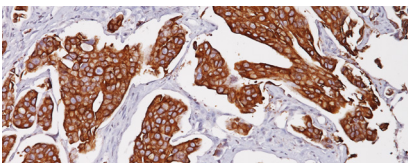
Uro-2™ (CK20 + p53)

In normal urothelium, the superficial umbrella cell layer shows reactivity for CK20 only; whereas, p53 nuclear staining is absent to focal.



Uroplakin II + Uroplakin III













Uroplakin II + Uroplakin III antibody may be a specific and sensitive antibody cocktail for urothelial carcinoma and in discriminating bladder cancer from renal and prostate carcinomas.



Uroplakin II

Studies have shown Uroplakin II mRNA was highly specific and was expressed in bladder cancer tissues and urothelial carcinoma of the bladder.

Key Antibodies for Bladder Pathology

Product Name	Source	Clone	Catalog Number
URO-3™ Triple Stain		BC8 + EP9 + Ks20.8	PM 370TS
Uro-2™ (CK20 + p53)		Ks20.8 + EP9	API 3001DS
Uroplakin II + Uroplakin III		BC21 + BC17	API; VLTM 3094
GATA-3		L50-823	CM; PM; OAI; VLTM 405
Uroplakin II		BC21	ACI; API; AVI; OAI; VLTM 3051
β-Catenin		14	CM; PM; VLTM 406
Smoothelin		R4A	CM; PM; VLTM 372
ERCC1		4F9	ACI 3147
CDH17		1H3	ACI; API; AVI; VLTM 3111
GATA-3 + Uroplakin II		L50-823/BC21	API; AVI 3173
CD44		BC8	PM 380
Uroplakin III		BC17	ACI; API; VLTM 3023