

NEW!

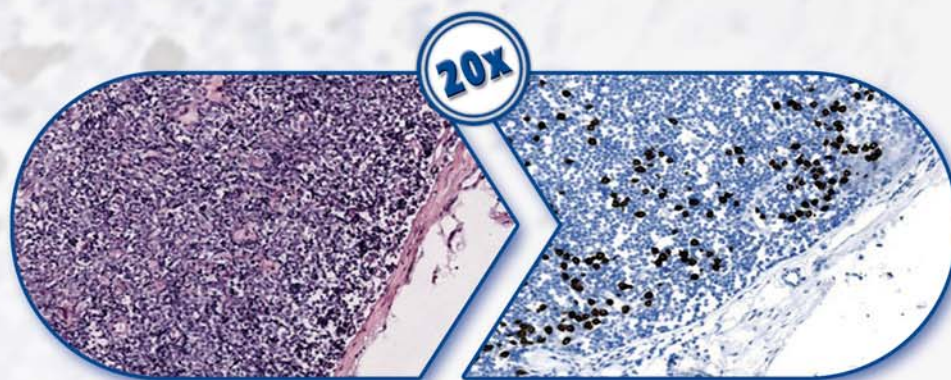
Bio - Optica
www.bio-optica.it

Cytonel+ Ultrarapid IHC kit

IHC DEL LINFONODO SENTINELLA IN TEMPI RAPIDI

PAN-CITOCHERATINA SU SEZIONI
CONGELATE IN SOLI 6-8 MINUTI

- Rimozione del tumore primario ed eventuale svuotamento del cavo ascellare nella stessa operazione
- Minor stress per il paziente evitando una seconda operazione
- Semplicità di utilizzo
- Sensibile risparmio di denaro per l'ospedale
- Certificato IVD-CE



H&E

Cytonel+ Ultrarapid IHC kit

Scientific literature on intraoperative pan-cytokeratin staining on frozen sections (updated 04/2009)

Krishnamurthy S et al. Cancer

2009 Apr;115:1555-1562

"Frozen section analysis plus rapid cytokeratin immunostaining have a role in the intraoperative evaluation of sentinel lymph nodes."

Choi YJ et al. Jpn J Clin Oncol.

2006 Aug;36(8):489-93

N=178 "ultrarapid IHC enhances intraoperative detection of SN micrometastases"

Johnston E et al. Applied Immuno Mol Morphol

2006 Mar;14(1):57-62

Rapid IHC improves sensitivity than when using intraoperative H&E alone

Lee IK et al. Eur J Surg Oncol

2006 May;32(4):405-9

The authors found 7 of 90 sentinel nodes that were intraoperatively IHC+ but negative on H&E. All these metastases were confirmed on paraffin sections.

Leikola J et al. Cancer

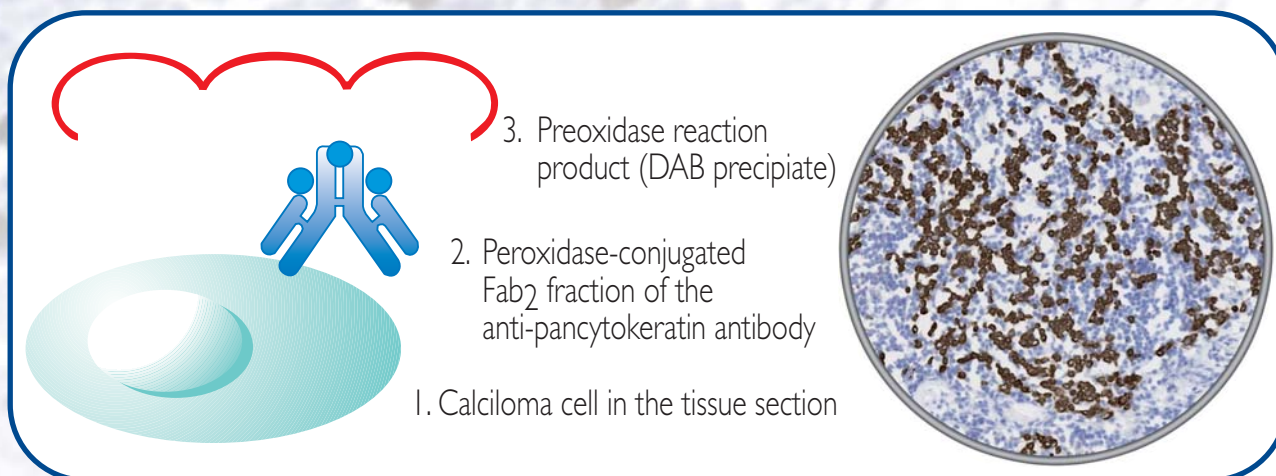
2005 Jul 1;104(1):14-9

So far the largest study (n=995 cases) evaluating the utility of intraoperative pan-cytokeratin staining on frozen sections. IHC was found to significantly improve the detection of micrometastases especially of lobular carcinomas. This study was done using an earlier version of Cytotel kit. These kits have the same performance.

Nährig J et al. Breast J.

2003 Jul-Aug;9(4):277-81.

"Ultrarapid IHC was a very sensitive and rapid technique for the intraoperative detection of metastatic involvement of sentinel lymph nodes"



Codici per ordinare

Cytotel+ Ultrapid IHC kit

15-CNP-100	100 tests
15-CNP-20	20 tests