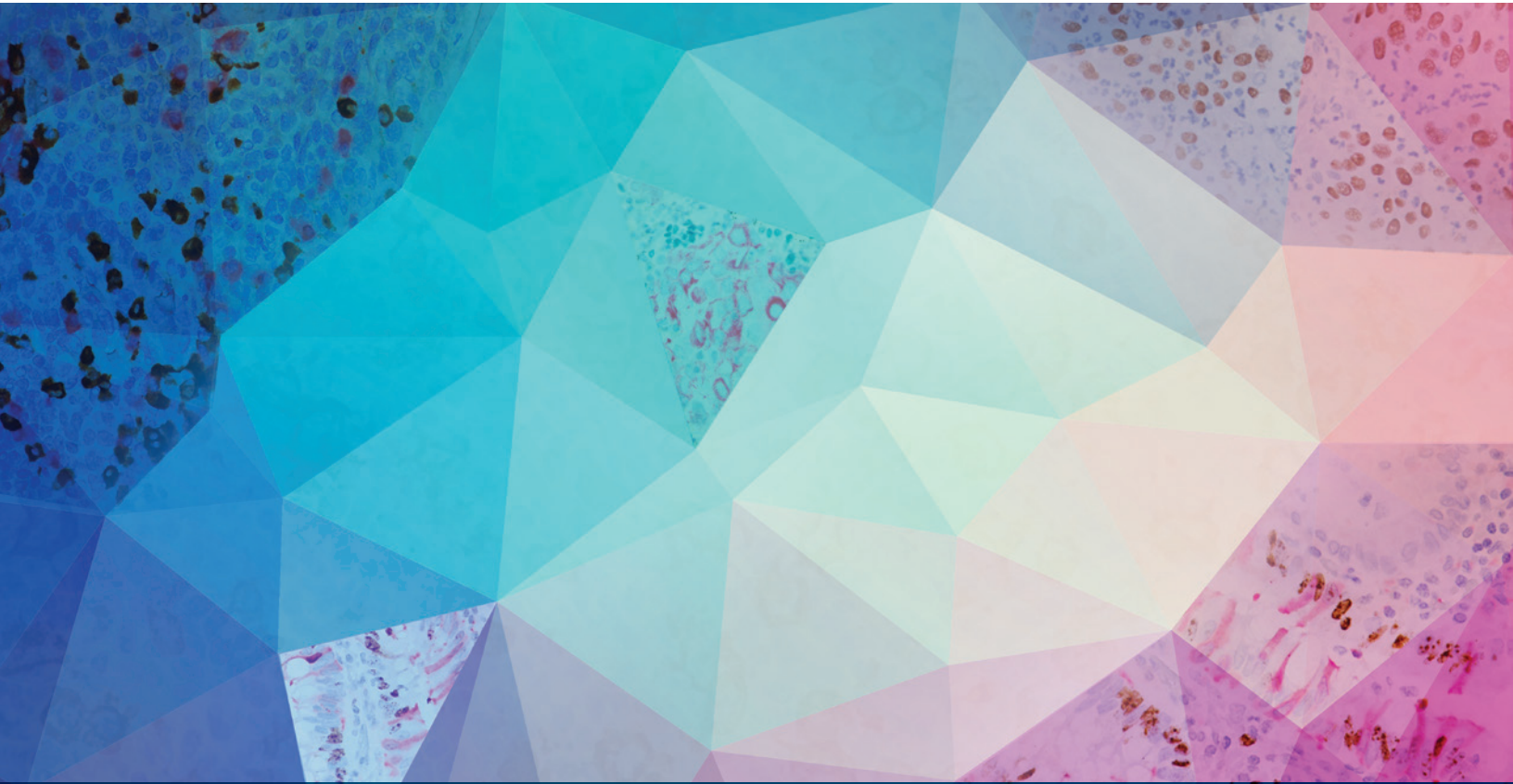


Multiplex IHC

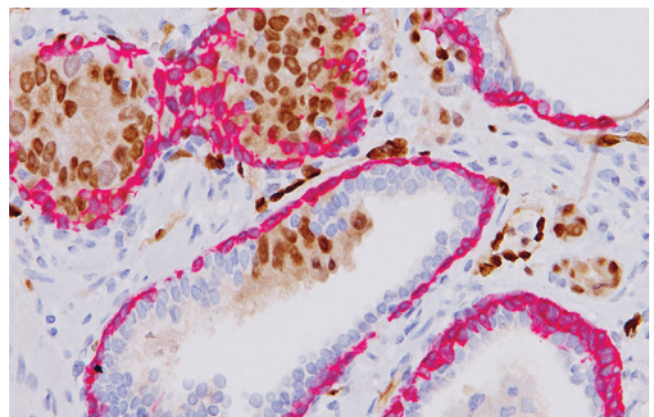
Patient care at its best



Preserve Tissue · Save Time & Money · Improve Patient Care

Biocare Medical's innovative range of IHC products includes novel antibody combinations and highly sensitive multiplex detection technology. These products allow for simultaneous IHC testing of morphologically distinct antigens which prevents the redundant staining of sections in cases where tissue is limited. Use of Multiplex IHC™ reagents also decreases total protocol time and the number of slides required, resulting in significant reagent and labor cost savings.

- ▶ Simultaneously test for multiple IHC markers
- ▶ Prevents the unnecessary staining of limited tissue
- ▶ Replace up to four single antibodies
- ▶ Reduces labor & reagent cost by >50 percent



ERG (DAB) + CK5 (FR) in prostate cancer and PIN*

Multiplex IHC™

Bladder Markers	Status	Clone	Cat. No.
Uro-2™ (CK20 + p53)	IVD	Ks20.8 + EP9	API 3001DS
URO-3 Triple Stain™ (CD44 + p53 + CK20)	IVD	BC8 + EP9 + Ks20.8	PM 370TS
Breast Markers	Status	Clone	Cat. No.
CK5/14 + p63 + CK7/18	IVD	XM26/LL002 + 4A4 + BC1/EP30	PM 360DS; VP 360DSK
GCDFP-15 + Mammaglobin	IVD	D6 + 31A5	PM 317DS
p120 + E-cadherin	IVD	98/pp120 + EP6	API 3011DS
Cell Proliferation/Death Markers	Status	Clone	Cat. No.
Ki-67 + Caspase-3	IVD	DVB-2 + Polyclonal	PPM 240DS
Colon Markers	Status	Clone	Cat. No.
CDX2 (M) + CDH17 (RM)	IVD	CDX-88 + EP86	API 3135DS
Lung Markers	Status	Clone	Cat. No.
Desmoglein 3 + p40 (M) + Napsin A (RM)	IVD	BC11 + BC28 + BC15	API 3132DS
Desmoglein 3 + Napsin A	IVD	BC11 + Polyclonal	PPM 428DS
p63 + CK5	IVD	4A4 + EP42	PM 391DS
p63 + TRIM29	IVD	4A4 + Polyclonal	PPM 427DS
TTF-1 + CK5	IVD	8G7G3/1 + EP42	PM 425DS
TTF-1 + Napsin A	IVD	8G7G3/1 + Polyclonal	PPM 394DS; IPI 394DS
TTF-1 + Napsin A (RM)	IVD	8G7G3/1 + BC15	API 3078DS
TTF-1 + p40 (cRM)	IVD	8G7G3/1 + BC28/cRM	API 3141DS
Melanoma Markers	Status	Clone	Cat. No.
Pan Melanoma (MART-1 + Tyrosinase) + Ki-67	IVD	M2-7C10/M2-9E3 + T311 + SP6	PM 362DS
Pan Melanoma (MART-1 + Tyrosinase) + S100	IVD	M2-7C10/M2-9E3 + T311 + Polyclonal	PPM 213DS
Prostate Markers	Status	Clone	Cat. No.
CK5/14 + p63 + P504S	IVD	XM26/LL002 + 4A4 + Polyclonal	PPM 225DS; IPR 225DS
CK HMW + p63 + AMACR (RM)	IVD	34βE12 + 4A4 + 13H4	API 3154DS
CK HMW + p63 + AMACR (RM) (ONCORE)	IVD	34βE12 + 4A4 + 13H4	OAR 3123
ERG-2™ (ERG + CK5)	IVD	9FY + EP42	API 437DS
Unknown Origin Markers	Status	Clone	Cat. No.
CDX2 + CK7	IVD	CDX-2-88 + BC1	PM 367DS
Lymphoma Markers	Status	Clone	Cat. No.
CD4 + CD8	IVD	4B12 + SP16	API 3157DS
Kappa (M) + Lambda (P)	IVD	L1C1 + Polyclonal	API 3159DS

Detection

Multiplex Name	Status	Composition	Cat. No.
MACH 2 Double Stain 1	IVD	anti-Mouse-AP + anti-Rabbit-HRP	MRCT523
MACH 2 Double Stain 2	IVD	anti-Mouse-HRP + anti-Rabbit-AP	MRCT525
intelliPATH Multiplex Secondary Reagent 2	IVD	anti-Mouse-HRP + anti-Rabbit-AP	IPSC5004
ONCORE Multiplex Detection 2	IVD	anti-Mouse-HRP + anti-Rabbit-AP	ORI 6045

Bio - Optica

Improving Pathology

02.21.27.13.1 - via San Faustino, 58
20134 Milano
www.bio-optica.it